

Let My Prayer Arise

Solo

P. Chesnokov

1.



LET MY PRAYER A - RISE IN THY SIGHT, RISE IN THY SIGHT AS

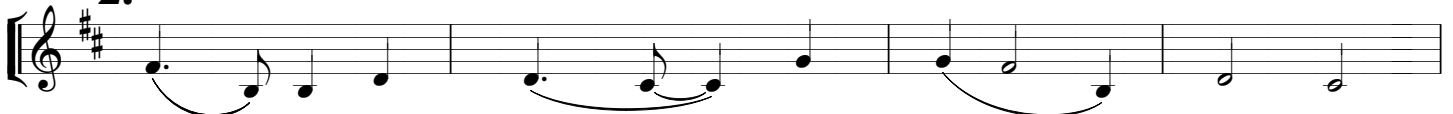


IN - CENSE AND LET THE LIFT - ING UP OF MY HANDS



BE AN EVE - NING SAC - RI - FICE.

2.



LORD, I HAVE CRIED TO THEE, HEAR ME.



HEAR THE VOICE, THE VOICE OF MY PRAYER AND WHEN I



CRY TO THEE, HEAR ME, O LORD.

3.



SET A WATCH O LORD BE - FORE MY MOUTH AND



KEEP THE DOOR OF MY LIPS, THE DOOR OF MY LIPS.

4.



IN - CLINE NOT MY HEART, IN - CLINE NOT MY HEART TO AN - Y



E - VIL THING, NOR TO PRAC - TICE WICK - ED DEEDS.

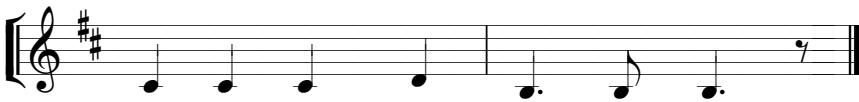
5.



LET MY PRAYER A - RISE IN THY SIGHT RISE IN THY SIGHT AS



IN CENSE AND LET THE LIFT - ING UP OF MY HANDS



BE AN EVE - NING SAC - RI - FICE.

Ending:

S A	
	BE AN EVE - NING SAC - RI - FICE.
T B	

Let My Prayer Arise

Refrain

Mixed Choir

P. Chesnokov

A (#1- #3)

S
A

LET MY PRAYER A-RISE IN THY SIGHT RISE IN THY SIGHT AS IN - CENSE AND

T
B

Musical score for section A, parts 1-3, Soprano and Alto parts. The score is in G major (one sharp) and 4/4 time. It consists of five measures. The lyrics are: LET MY PRAYER A-RISE IN THY SIGHT RISE IN THY SIGHT AS IN - CENSE AND. The Soprano part is on a treble clef and the Alto part is on a bass clef.

* Ending #5

LET THE LIFT - ING UP OF MY HANDS BE AN EVE - NING SAC - RI - FICE.

Musical score for section A, ending #5, Soprano and Alto parts. The score is in G major and 4/4 time. It consists of five measures. The lyrics are: LET THE LIFT - ING UP OF MY HANDS BE AN EVE - NING SAC - RI - FICE. The Soprano part is on a treble clef and the Alto part is on a bass clef.

* Ending #5

B (#2 - #4)

LET MY PRAYER A-RISE IN THY SIGHT RISE IN THY SIGHT AS IN - CENSE AND

Musical score for section B, parts 2-4, Soprano and Alto parts. The score is in G major and 4/4 time. It consists of five measures. The lyrics are: LET MY PRAYER A-RISE IN THY SIGHT RISE IN THY SIGHT AS IN - CENSE AND. The Soprano part is on a treble clef and the Alto part is on a bass clef.

LET THE LIFT - ING UP OF MY HANDS BE AN EVE - NING SAC - RI - FICE.

Musical score for section B, ending #5, Soprano and Alto parts. The score is in G major and 4/4 time. It consists of five measures. The lyrics are: LET THE LIFT - ING UP OF MY HANDS BE AN EVE - NING SAC - RI - FICE. The Soprano part is on a treble clef and the Alto part is on a bass clef.